

MODEL 181

ACCUMULATION & SORTING TURNTABLE

This unit is used in applications to accumulate or sort products to orient them allowing the operator to perform a variety of tasks. The deck can be made of carbon or stainless steel.

Standard Table Diameters: 3' to 8'

Standard Siderails: 6" high rotating

Standard Speed: 1-3 Revolutions per minute

Bearings: Grease Sealed

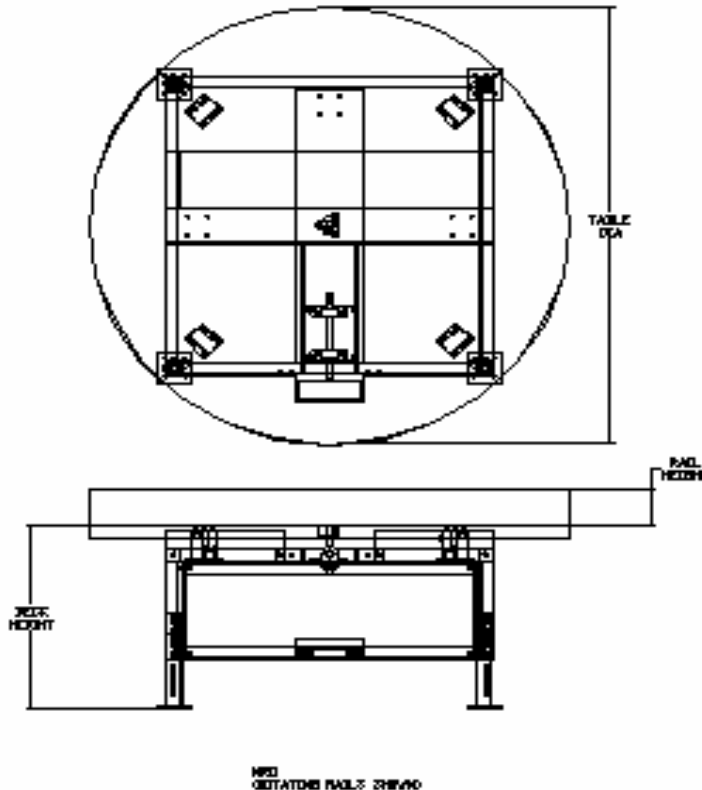
Standard Motor: ½ Hp 230/460/3/60 TEFC

Standard Supports: 30" Elevation Top of Belt

Standard Drive: Bottom mount

Standard Frame:

Carrier Platform:



MODEL 181